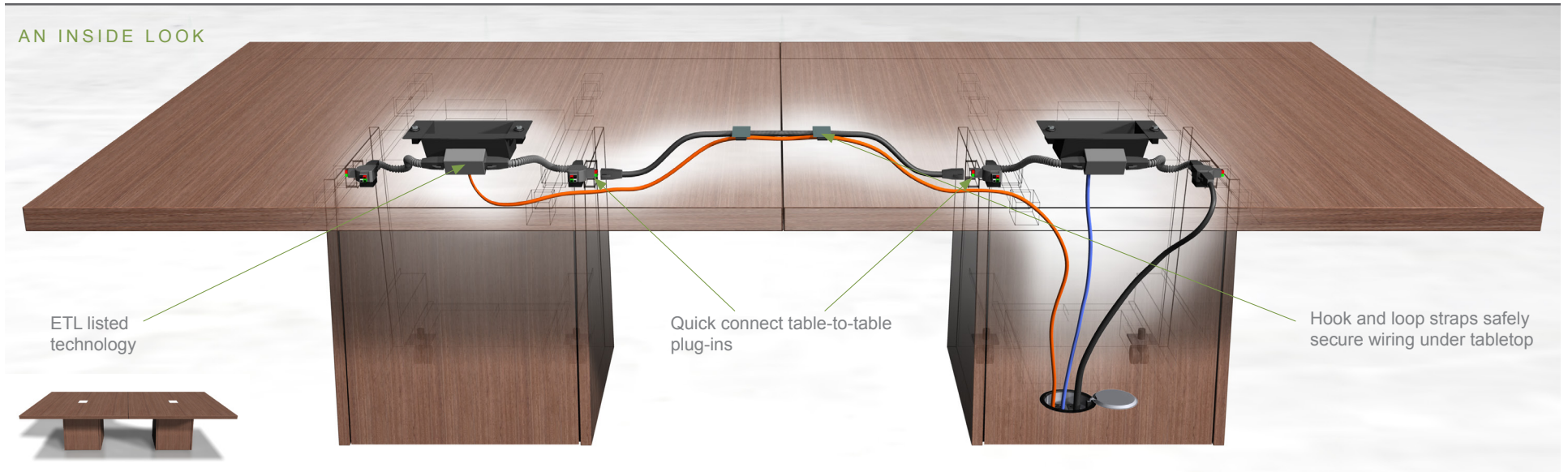


SUMMIT DAISYLINK TECHNOLOGY

Easy table-to-table power connectivity



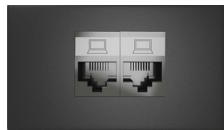
BENEFITS

Choose Summit's all-new ETL listed power box for your next Summit project to:

- Save money and improve room aesthetics by reducing your number of floor cores
- Easily reconfigure your tables with simple quick-connect table-to-table plug-ins
- Improve productivity and safety from fewer accidental disconnects

ADD TECHNOLOGY

Popular plate choices that fit in the additional openings include:



2 RJ45s (data/network connectors)



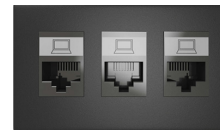
1 HDMI, 1 VGA and 1 mini-stereo



1 HDMI



1 VGA, 1 mini-stereo and 1 RJ45



3 RJ45s

Please note:

Data cannot be daisy chained. Each table would have a unique data wire running from a floor core, as shown in the top image.

YOUR SUMMIT

Choose table and hatch lid materials to match your room aesthetics. Power and data boxes remain safely hidden within the table base, even when the Summit's top is tilted to fit through doorways and move from room to room.



Your Summit ETL listed DaisyLink box comes standard with:

- 2 simplex power outlets
- 2 charging, or power, USBs
- 2 openings for additional technology

