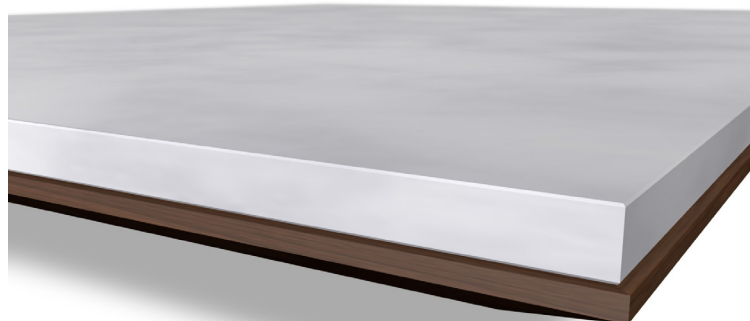
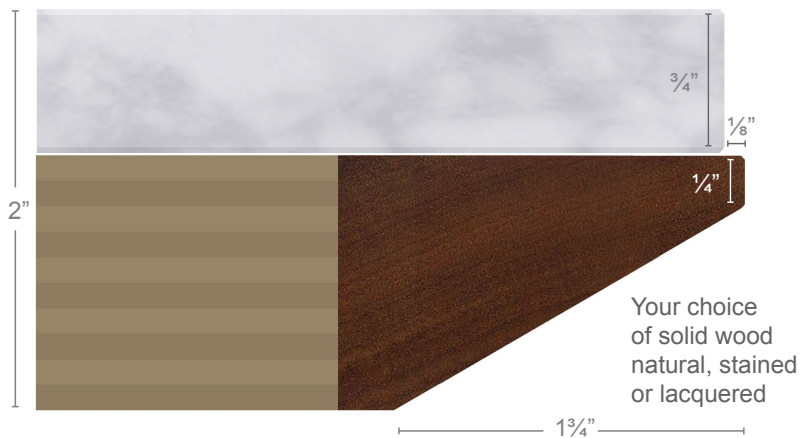


OVERLAY reverse knife edge with stone



Shown in Imperial White Danby marble, solid walnut, plain sliced walnut veneer and brushed stainless steel
Available in a variety of materials to meet your custom design needs • A comfortable 20 inches of leg room between the table edge and base

Your choice of stone or engineered quartz



WallGoldfinger's *Overlay* reverse knife edge with stone provides you:

- the integrity and durability of stone
- a reverse knife edge to hide wear and tear
- a sleek, thin design
- a beautiful layered look of matching or contrasting materials

