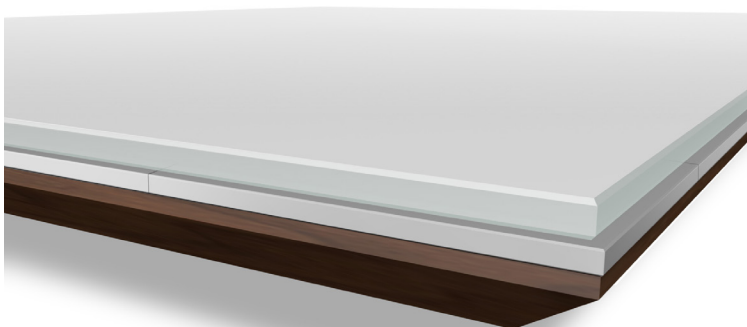
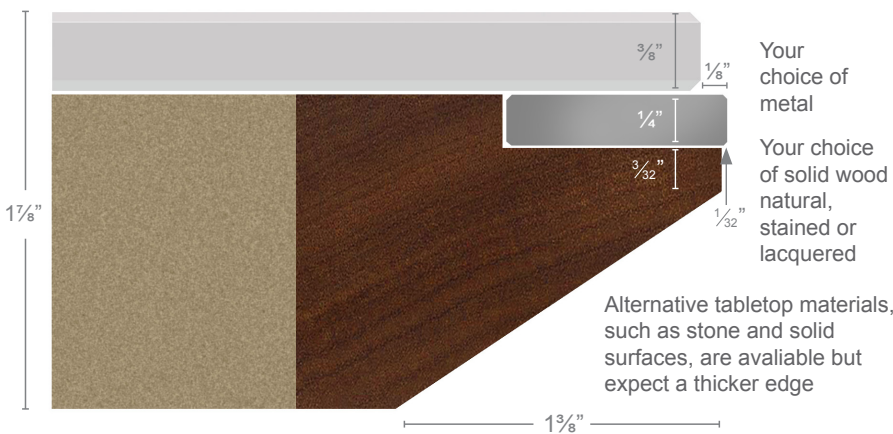


# STRATA reverse knife edge



Shown in low iron, acid-washed glass back-painted white, solid walnut, plain sliced walnut veneer and polished and brushed stainless steel  
Available in a variety of materials to meet your custom design needs • A comfortable 20 inches of leg room between the table edge and base

Your choice of back-painted glass



WallGoldfinger's *Strata* reverse knife edge provides you:

- layered materials for advanced design and to match any room decor
- the modern look of metal
- a contemporary reverse knife edge that helps prevent wear and tear

 **WALLGOLDFINGER**  
FURNITURE | a division of Mark Richey Woodworking