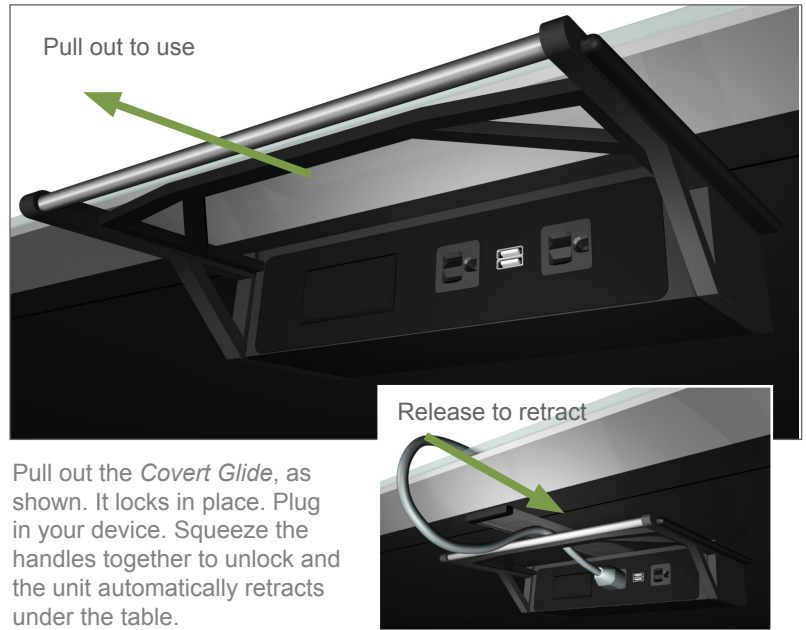


COVERT GLIDE

Designed and engineered exclusively by WallGoldfinger, the *Covert Glide* provides an under table, out of sight power option for those seeking to maintain a tabletop's surface, and for those wanting a thin table edge.

The *Covert Glide* includes:

- 2 simplex power outlets
- 2 charging USBs
- A blank plate where additional technology can be added



CUSTOMIZE YOUR COVERT GLIDE

Add technology to the *Covert Glide*. Popular plate choices that fit in the additional opening include:

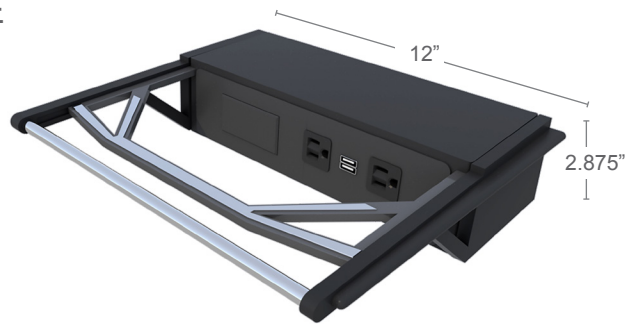


2 RJ45s (data/network connectors)

1 HDMI, 1 VGA and 1 mini-stereo

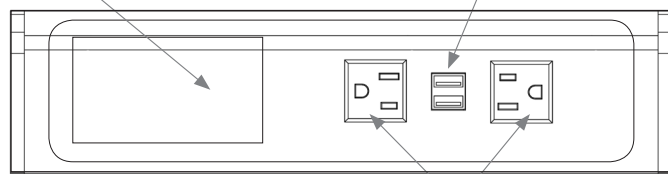
3 RJ45s

1 VGA, 1 mini-stereo and 1 RJ45



Cut out for additional data connections, as needed

2 charging, or power, USBs

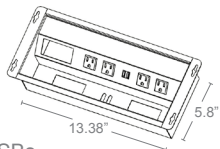


Standard: 2 simplex power outlets

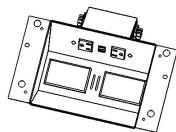
OTHER POWER OPTIONS

FIXTURE BOXES:

Power and data box with 4 simplex power outlets, 2 USBs, and 3 openings for additional technology (below a 6"x13½" hatch lid)



ETL listed box for daisy chaining with 2 simplex power outlets, 2 USBs and 2 openings for additional technology (below a 6"x8" hatch lid)



APRON POWER:

Apron power is available on custom tables with and without a flip-up receding door. Doors match apron materials to maintain table aesthetics.



POWER DRAWERS:

Power drawers are customized to match your table's edge profile and offered with and without an apron.

