

Get inspired

monitor solutions

retracting | wells | fixed | more

A technology integrator, WallGoldfinger provides a host of monitor solutions for boardroom, conference spaces and more. WallGoldfinger's advanced engineering incorporates monitors in tabletops, table wells, desks and even credenzas. WallGoldfinger additionally integrates presenter (also called confidence) monitors in table ends or islands, and it makes telepresence tables in a variety of sizes for rooms with small and large wall-mounted screens. WallGoldfinger monitor solutions are in some of the world's leading corporate, institutional and government spaces, providing key decision makers with the up-to-the-minute, and even lifesaving, information they need to succeed.



Get inspired

MONITOR SOLUTIONS

RETRACTABLE



DESCRIPTION

This high-tech, 50-foot boardroom table features 24 Arthur Holm 19" retractable monitors, 44 microphones and 22 apron power/data units with WallGoldfinger exclusive retractable lids. Moving power to the apron allowed more space in the tabletop technology band for the large monitors.

Get inspired

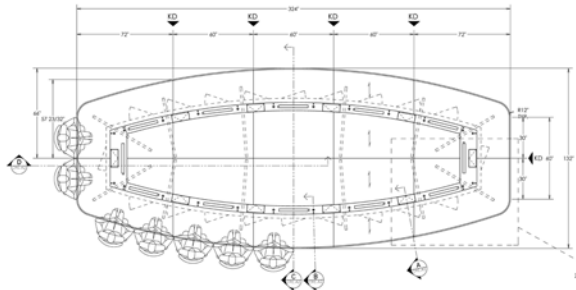
MONITOR SOLUTIONS

RETRACTABLE



DESCRIPTION

This 27-foot boat-shaped boardroom table features 12 Arthur Holm retractable monitors, 10 custom fixture boxes and 24 button microphones set into a technology band. This table is also a standout for its Reveal Protective Edge, which features a black resin on the bottom of the edge to protect both the table and chair arms.



Get inspired

MONITOR SOLUTIONS

RETRACTABLE



Get inspired

MONITOR SOLUTIONS

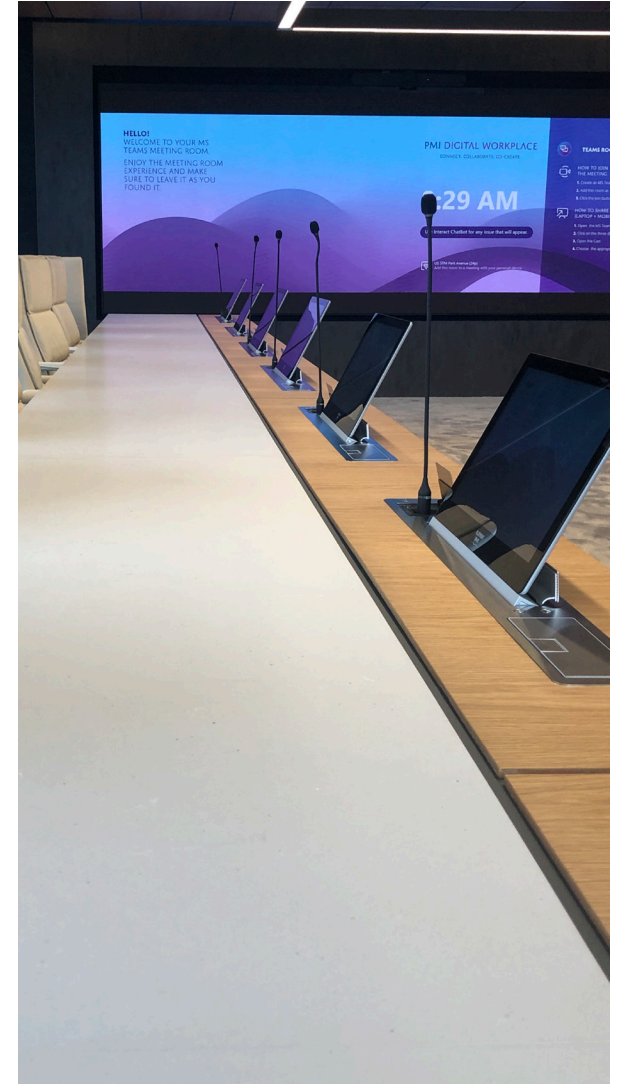
RETRACTABLE



Get inspired

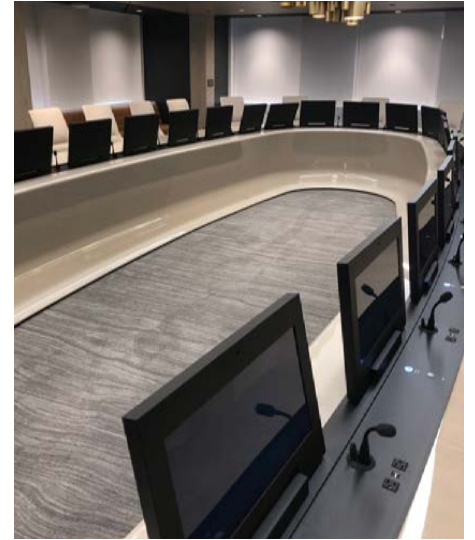
MONITOR SOLUTIONS

RETRACTABLE



Get inspired

MONITOR SOLUTIONS FOLDING



Get inspired

MONITOR SOLUTIONS FIXED



Get inspired

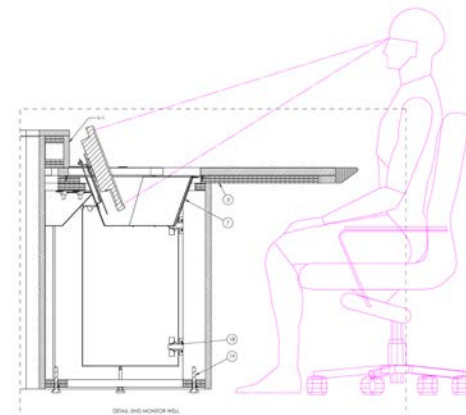
MONITOR SOLUTIONS

WELLS



DESCRIPTION

Created for a health care organization, this nearly 50-foot open center elliptical table and side gallery tables features unique LED fixed monitors set at an angle in tabletop wells below a riser. The table was carefully engineered with sight distances in mind and part of the project even included building a table section in advance for the client to try out for visibility.



Get inspired

MONITOR SOLUTIONS WELLS



DESCRIPTION

This 22-foot open center elliptical table features four large 48-inch Samsung DM-E monitors in the table base interior wall allowing monitors to be seen from all seats without any disruption to sight lines and while maintaining a nearly pristine tabletop. The table does include 13 button microphones in the top, one drop-in cable cubby and a carefully crafted hardwood pencil stop. The base is additionally unique because it has a pass-through door allowing access to clean the floor inside the table.

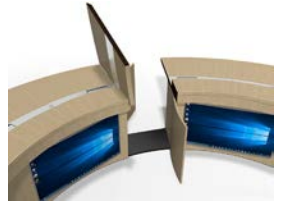
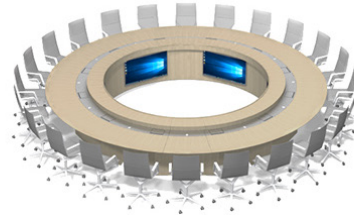
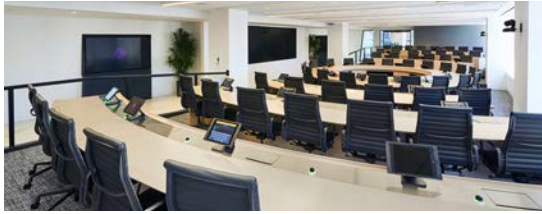
Get inspired

MONITOR SOLUTIONS WELLS



Get inspired

MONITOR SOLUTIONS WELLS



Get inspired

MONITOR SOLUTIONS

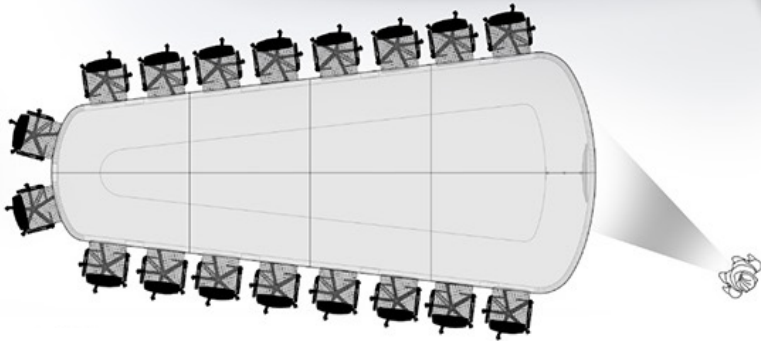
PRESENTER



Get inspired

MONITOR SOLUTIONS

PRESENTER



Get inspired

MONITOR SOLUTIONS

RETRACTABLE IN CREDENZAS



Get inspired

MONITOR SOLUTIONS

RETRACTABLE IN CREDENZAS



DESCRIPTION

Credenzas made with monitor lifts are a popular choice in front of windows. Instead of wall-mounted monitors that block views, monitors housed within credenzas allow windows to be appreciated when monitors are not in use and provide an overall cleaner look for corporate spaces.

Get inspired

MONITOR SOLUTIONS

WALL MOUNTED



Get inspired

MONITOR SOLUTIONS

WALL MOUNTED



Get inspired

MONITOR SOLUTIONS

WALL MOUNTED



About

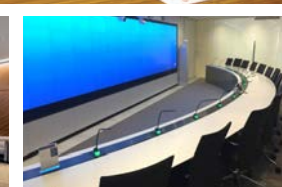
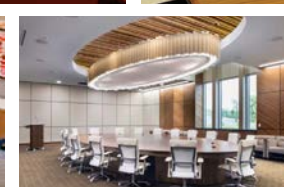
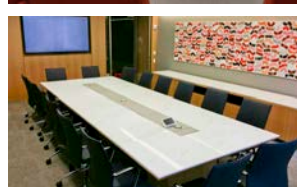
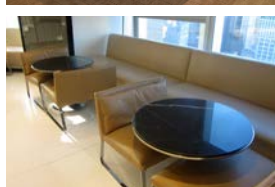
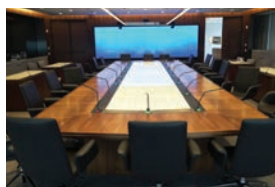
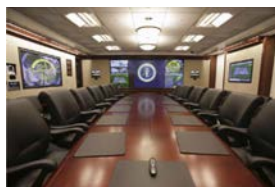
WALLGOLDFINGER FURNITURE

WallGoldfinger Furniture, with sales, design and engineering offices in an historic Vermont schoolhouse and a state-of-the-art factory in Massachusetts, is a division of Mark Richey Woodworking.

With a legacy spanning more than 50 years, WallGoldfinger Furniture builds the world's finest executive furniture, including custom boardroom and conference tables, lecterns and credenzas and meticulously crafted Arbor and Summit product lines for today's business people. Furniture solutions integrate the latest communication technology and are built with responsibly sourced materials in an environmentally friendly space.

This incredible furniture is sold to top corporate, institutional and government decision makers in collaboration with leading architects. Nationally known for its work with Fortune 500 corporations, leading financial and insurance institutions, large law firms, universities and government agencies, past clients include the White House, New York Stock Exchange, International Monetary Fund and the United Nations.

Client- and employee-focused, WallGoldfinger Furniture's vision is to be a leader in offering innovative, functional and unique furniture solutions to corporate customers worldwide with the values of quality, customer service, ethics, integrity and sustainability at the forefront.

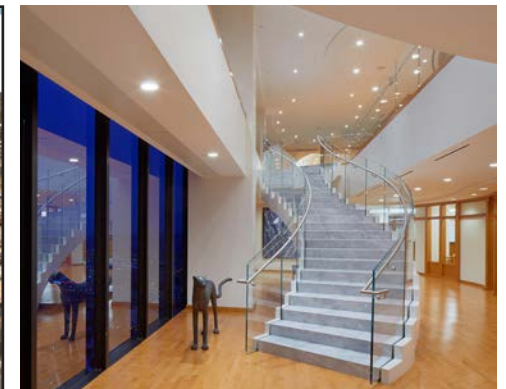


About

MARK RICHEY WOODWORKING

*M*ark Richey Woodworking crafts and installs high-end architectural woodwork. The more than 40-year-old company's work enhances the experience of performing arts centers, museums, corporate headquarters, academic institutions, residences and restaurants across the country.

Employees are craftspeople with a passion for quality, reliability, tradition and innovation. The factory masterfully blends high tech tooling with sustainable energy.



About

SUSTAINABLE APPROACH



The Mark Richey Woodworking/WallGoldfinger Furniture, Newburyport, Mass., factory, is powered by on-site solar and wind.

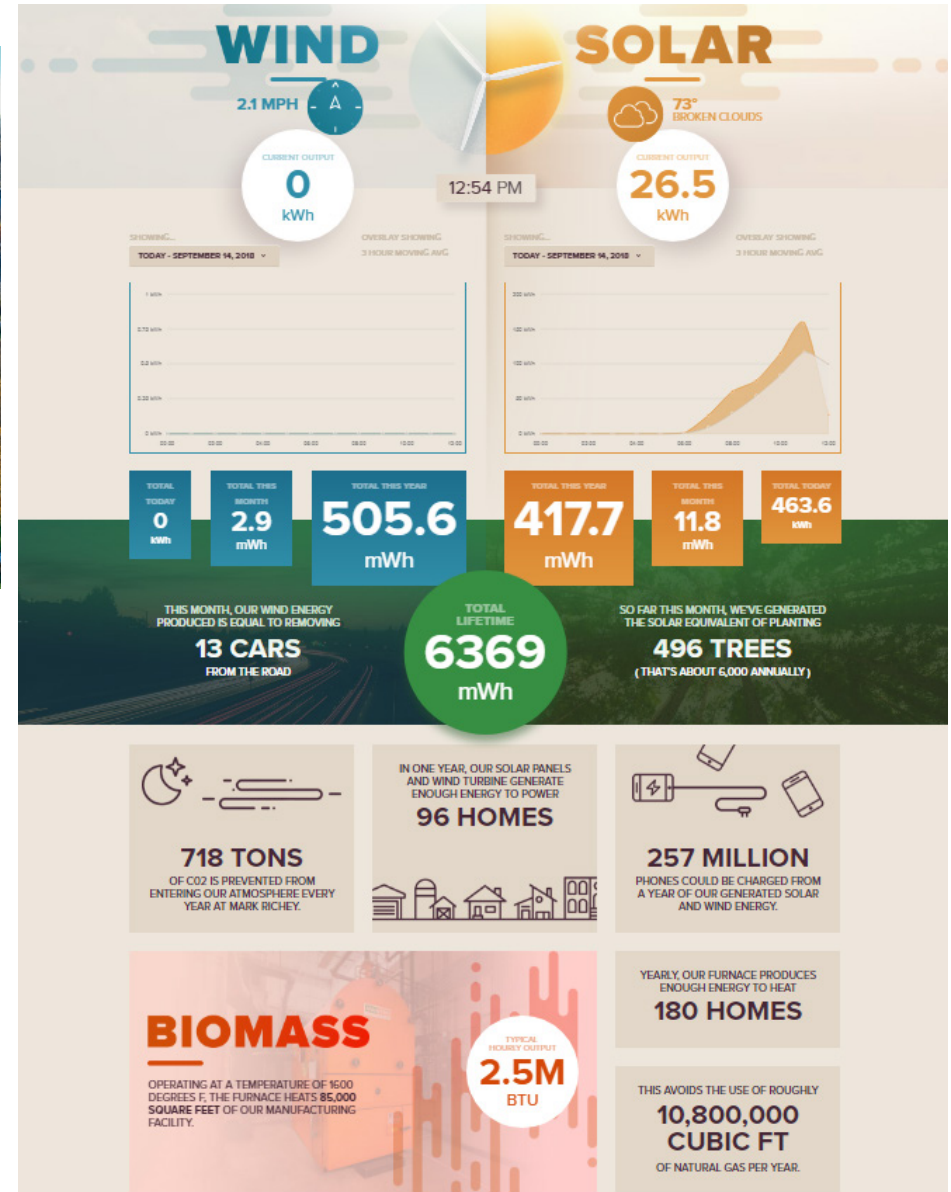


Teresa and Mark Richey receiving an EPA Environmental Merit award

Forest Stewardship Council® certified,
Architectural Woodwork Institute certified,
WBE/MBE-certified, U.S. Green Building
Council member



Left, a biomass furnace burns waste and heats the factory; right, a robotic finish system, the first of its kind in the country, provides not only superior finish quality and consistency for clients, but reduced over spray and closed chamber system for employee and environmental wellness.



From: www.markrichey.com/sustainability

About

GIVING BACK

*M*ark Richey Woodworking gives back to its local and world community through power generation, materials and other donations, and through relief efforts and building projects.

Those building and outreach efforts have included sponsoring the building of a school in Afghanistan in 2008. In 2010, Mark Richey assisted with relief efforts in Haiti following an earthquake and ultimately donated all of the millwork for a new, 300-bed teaching hospital and dormitories that opened in 2013. In 2015, the company contributed to relief efforts in Nepal following a major earthquake there. In 2022, company president and treasurer Mark and Teresa Richey joined the Himalayan Cataract Project in helping to restore vision to hundreds in remote Rujewa, Tanzania.

Locally, the business educates school children on sustainable manufacturing and much more.

Korkut Primary School, northern Afghanistan



University Hospital, Mirebalais, Haiti

M/WBE AND MBE CERTIFIED

*M*ark Richey Woodworking and WallGoldfinger Furniture is M/WBE certified in Massachusetts and New York City and nationally MBE certified.

The certifications recognize Teresa Richey (pictured right), a native of Peru, majority owner and treasurer. Mark Richey Woodworking further is committed to fair hiring practices for all, including women and minorities, sustainable practices and relief efforts in particularly impoverished nations.

M/WBE and MBE certifications are meant to address historic disparities and provide minority and women entrepreneurs increased opportunities.

“I am so humbled,” Teresa said of the recognitions.



Teresa Richey, majority owner and treasurer