

Summit
TILT-TOP TABLES



WALLGOLDFINGER
FURNITURE

*I*ndustry leading Summit tilt-top tables offer the ultimate in reconfigurability for conference rooms and more. Tabletops tilt to allow tables to fit through doorways, and tables are on casters so they can easily roll to create a new table configuration or to be stored. When the tabletop is lowered, the table's casters automatically retract for stability.

Most commonly made in a 60"x60" size, Summits are constructed with diverse, high-quality materials, including veneer, plastic laminate, glass, lightweight stone, resins and metal edging.

Summit tables fully integrate power and data with wire management within the table base. UL listed daisy chain technology provides quick plug-and-use reconfigurability. The table base design further provides exceptional leg room from all sides.

When you need an elegant, reconfigurable conference or boardroom table solution, Summit, made exclusively by WallGoldfinger Furniture, a division of Mark Richey Woodworking, is your choice.



DESIGN
60" square table
tabletop power and data

MATERIALS
Pietra Gray porcelain
brushed stainless steel
dark quartered walnut veneer

DESIGN

60" square tables
and 72" round tables
no power and data

MATERIALS

White cast acrylic
brushed stainless steel
rift cut white veneer





DESIGN	MATERIALS
60" square tables tabletop power and data	light quartered walnut veneer



DESIGN

60" square tables
tabletop power and data

MATERIALS

white marble
brushed stainless steel

TECHNOLOGY

quick look



POWER AND DATA



6"x8" power box affixed in table base with (2) Simplex, (2) charging USB-As, (2) telecom plate openings for additional technology and UL listed daisy chain cables with quick connect plugs

HATCH LIDS



Metal hatch



Veneer hatch

Ask about glass, cast acrylic, porcelain, engineered quartz and stone lids to match tabletop material.

WIRE MANAGEMENT



Removable base panels provide access to wiring with no tools required



Convenient table-to-table quick connect plug-ins

FUNCTION

UNLOCK



Loosen one side of Anderlocs (if using)



Rotate Anderlocs under one tabletop (for easy access later and no loose parts)

TILT

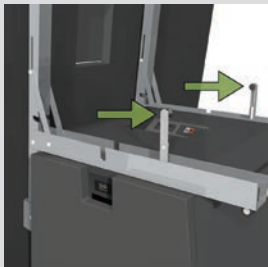


Pull bar under table



Bar releases top into tilted position and engages casters

LOCK



Pull levers to lock casters into position

ROLL



Easily push to a storage area

STORE



Nest tables in tilted position for compact storage

SPECIFICATIONS

SIZES



54"x54" tabletop (with 24"x24" base)



60"x60" tabletop (with 24"x24" base)



60"x72" tabletop (with 24"x36" base)



60"x84" tabletop (with 24"x48" base)

Summit tables 60"x60" and greater offer 18" of leg room on all four sides.

BASES



Trapezoid

Summit tables are 30"-30½" high at the tabletop surface, providing 28½" of clearance under the tabletop.

EDGES



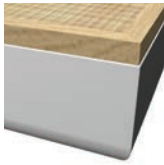
Multi ply veneer



½" solid wood



Comfort Edge aluminum pan frame



Comfort Edge with ¼" solid wood overlay



Applied metal edge

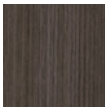
Edges are typically 1½" thick. The Comfort Edge with overlay is 1¾". Applied metal edges with stone are 2".

MATERIALS

TOPS



Veneer



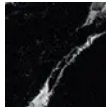
Plastic laminate



Cast acrylic



Lightweight stone*



Engineered quartz*



Porcelain*



Glass*

*Glass, stone, engineered quartz and porcelain are only available in tabletop sizes of 72" or smaller.

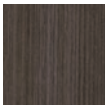
EDGES



Veneer



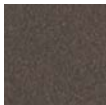
Solid wood



Plastic laminate



Metal

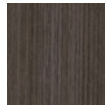


Powder coated metal

BASES



Veneer



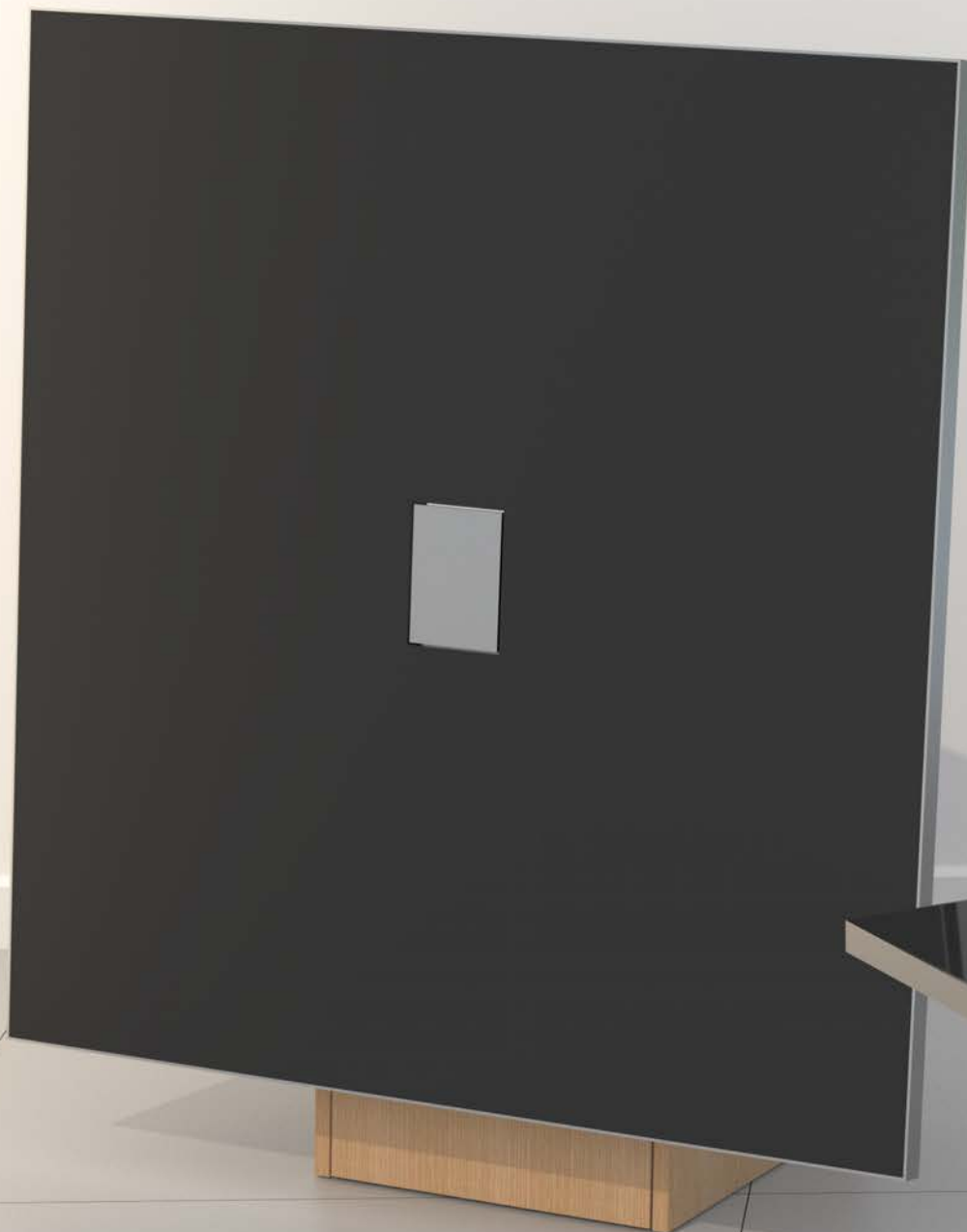
Plastic laminate



Urethane



Clad metal



WALLGOLDFINGER
FURNITURE

a division of Mark Richey Woodworking

802.278.5800 | sales@wallgoldfinger.com | www.wallgoldfinger.com