

BOARDROOM TABLE WITH MONITORS



WALLGOLDFINGER | CASE STUDY 4

THE CHALLENGE

An international corporation is looking for a gorgeous, high-tech boardroom table for its New York offices. The table needs to be as stunning as it is large – 50 feet in total and 6 feet wide. This company is a standout and the architect has designed a standout table. It needs a custom furniture maker of the highest quality.

THE SOLUTION

WallGoldfinger has been designing, engineering and creating the highest quality corporate furniture for decades. WallGoldfinger’s furniture integrates technology and can meet almost any design and space challenges.

This global leader chooses WallGoldfinger’s custom, quality solution. WallGoldfinger’s expert team of furniture makers creates the stunning table in sections so it can fit in delivery trucks, loading docks and elevators prior to installation. The table is made in WallGoldfinger’s state-of-the-art factory, and the client and architect could not be more pleased with the result.

DESIGNER

Swanke Hayden Connell Architects, New York, NY

MATERIALS

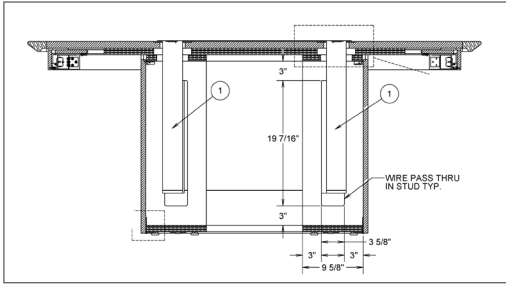
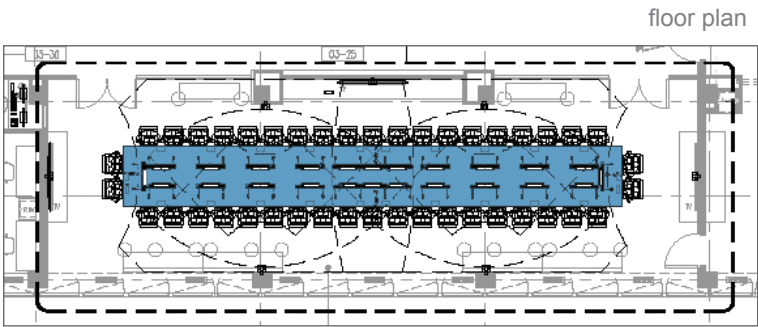
Quartered walnut veneer, plain sliced walnut veneer, solid walnut, brushed stainless steel

TECHNOLOGY

24 monitors, 44 microphones, 22 apron power/ data units

UNIQUE ATTRIBUTES

50-feet long; apron power features WallGoldfinger retractable lids to maintain table aesthetics



apron power with retractable lid

"Congrats on the beautiful 50-foot conference table It truly was quite a woodworking feat, and the client could not have been more pleased. I appreciate all the time and effort put in ... in getting it delivered and installed to meet the client's timetable."

— **Herb Krauss**
Senior Account Executive
Arenson Office Furnishings
New York, NY



MIT-483